



Service Guide

Bulkhead Aeromaster

Contents

<i>General Maintenance</i>	1
<i>Catch Adjustment</i>	2
<i>Realign Door Panel</i>	3
<i>Realign Lower Door Track</i>	4

General Maintenance

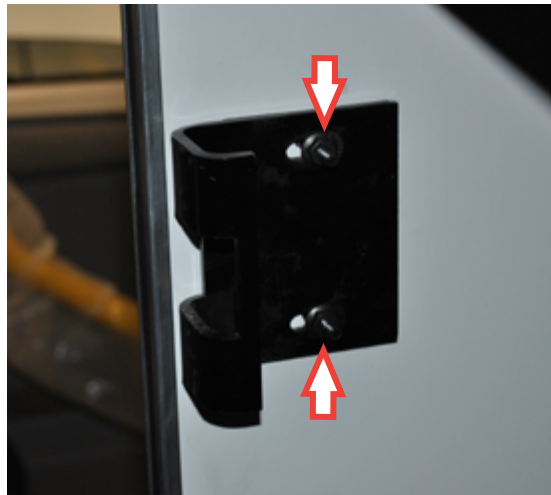
NOTE: Review the checklist at regular preventative maintenance schedules. Lubricate latches and correct any issues as soon as possible to prevent any problems from becoming worse.

- Check operation of the door locks at each door from both the inside and outside.
- Lubricate the lock cylinders with a lightweight oil.
- Check that interior and exterior handles are securely mounted.
- Check alignment of latches and catches. At least 1/8" of the door handle latch tongue needs to engage the catch plate.
- Check for wear on the catch plates and latch tongue.
- Inspect and clean rubber seals around door edges.

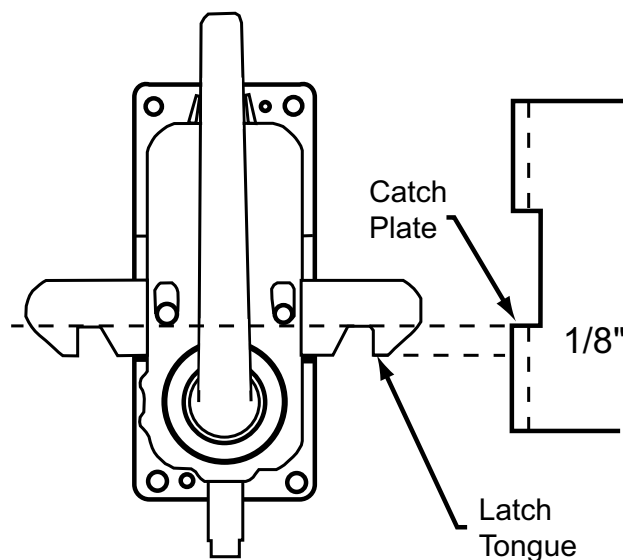
Catch Adjustment

NOTE: The normal wear and racking of the truck over time may cause the door handles and catches to become misaligned. This catch alignment procedure is the same on both manual and electronic (keyless) catches. All of the adjustment is in the (receiver) catch. There is no benefit in removing the door handle. Worn handle latches and catch plates can cause the door to unlatch when the truck is in motion. Replace with new parts as needed.

1. Loosen the two bolts that attach the door catch plate to the wall. Slide the cab door into the Closed position.
2. Align the catch plate with the latch on the door and tighten the nuts.



Bulkhead manual door catch

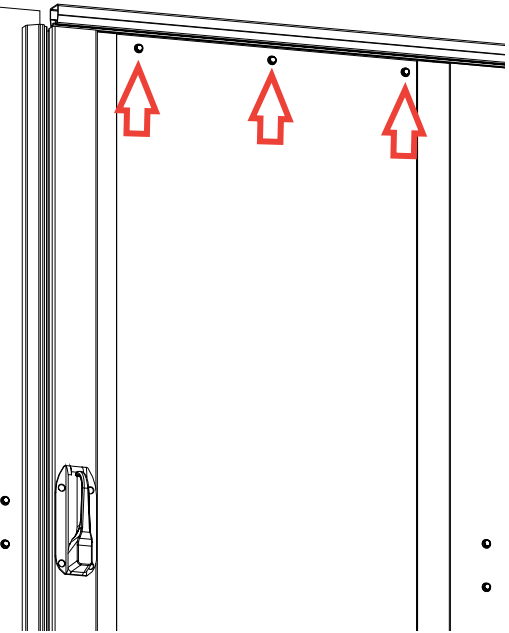


Align latch and catch plate

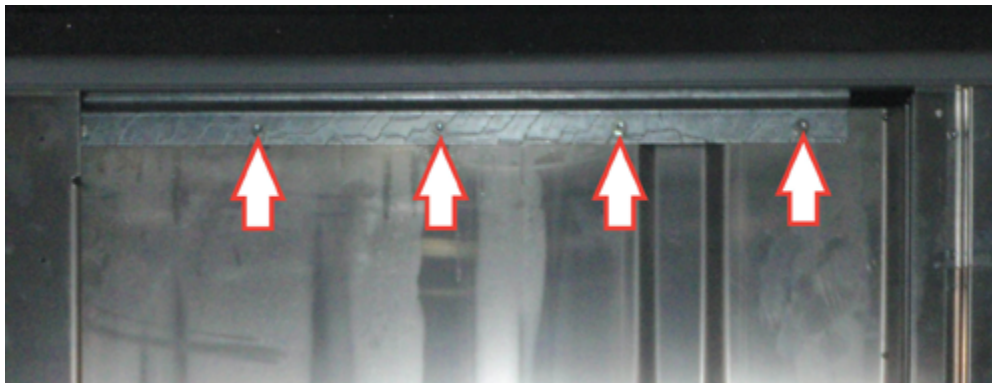
Realign Door Panel

NOTE: In some cases there is not enough adjustment at the door catch plate because the door panel has become askew. In that case, the door panel can be removed and realigned.

1. Close and latch the door and visually inspect the door and jamb alignment at the top and bottom. If the door panel contacts the jamb at one point while leaving a visible gap at the other end, realign the door panel.
2. Remove the fasteners that attach the door panel to the upper roller. These fasteners can be screws, nuts and bolts, or rivets.
3. Close the door from the cargo side and clamp the door panel to the door jamb at the top and bottom.
4. Slide the upper roller so the holes closely align and using the holes in the roller as a guide drill new F-bit (or 1/4") holes in the panel.
5. Attach the panel to the door with 1/4-20 x 1" bolts, lock nuts and flat washers on both sides.
6. Remove the clamps. Check the catch alignment and adjust as necessary. The hold-open catch plate may also need to be adjusted.
7. Cycle the door to ensure proper function.



Door roller fasteners (cab side)

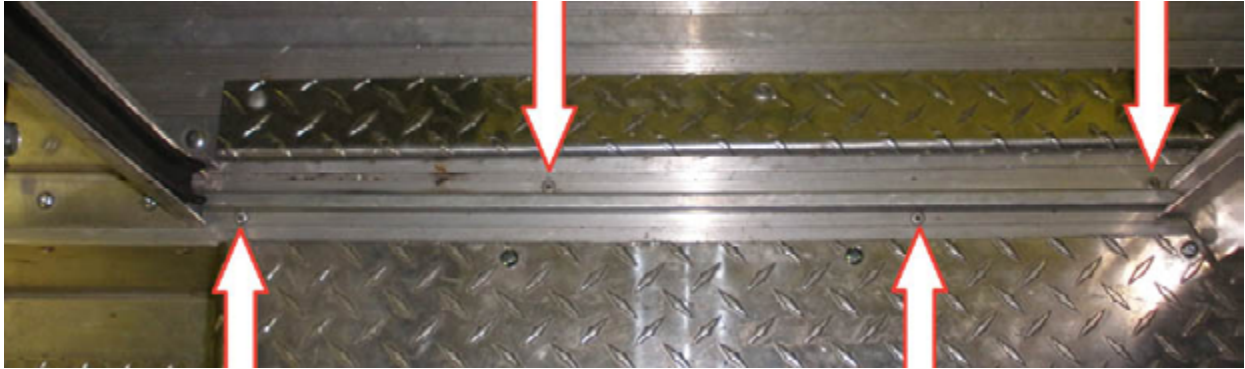


Door roller fasteners (cargo side)

Realign Lower Door Track

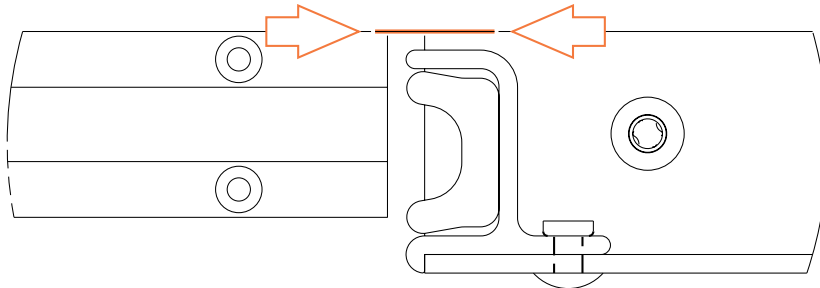
NOTE: The normal wear and racking of the truck over time may cause the guide to become misaligned with the door jamb. If the door contacts the forward or rearward edge of the vertical door jamb preventing it from seating, the lower door guide can be adjusted.

1. Using a drill with a #11 bit, drill the heads off the rivets that hold the lower door track to the floor. Leave the rivet directly behind the driver's seat in place.



Remove all but one fastener

2. Align the front edge of the door track with the front edge of the right-hand panel lower flange.



Align the leading edges of the track and bulkhead panel flange

3. Using a #11 (or 3/16") bit, drill NEW mounting holes through the track and floor on either side offset from the original holes or on the opposite side of the track. Do NOT use the original holes.
4. Secure the track to the floor with rivets.

Utilimaster Customer Service

574-848-2200

Email: CustSvc@Utilimaster.com

Bulkhead, Aeromaster March 2015

©Utilimaster Corp., 603 Earthway Boulevard, Bristol, Indiana 46507 USA